

Fig No:DA83HP / SR83HP

1/2" ~ 2" (DN 15 ~ DN 50)

DA: Double Acting SR: Spring Return



Valve Specification :

Design specification according to EN 12516-3

Material: stainless steel, carbon steel or special alloy upon request

Working Pressure (CWP) : 1000 Psi

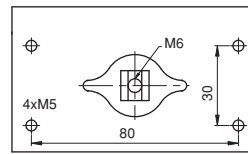
Temperature Range : -4 to 356 °F (-20 to 180 °C)

Pressure Test According to API 598 / EN 12266-1

Shell test by water : 1500 Psi

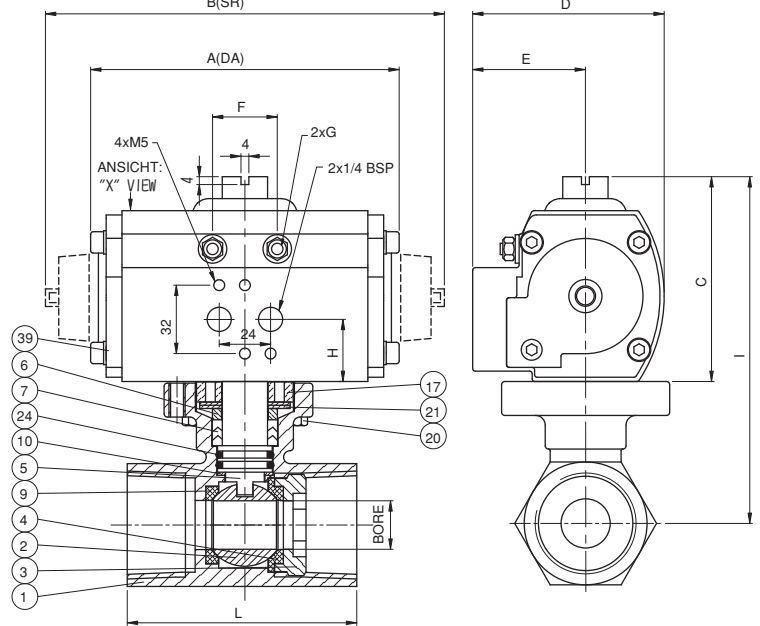
Closure seat by Air : 80 ~ 100 Psi

DETAIL "X"



MATERIALS LIST

NO	PART	MATERIAL	Q,TY
1	BODY	ASTM A351 GR.CF8M	1
2	BALL	ASTM A351 GR.CF8M	1
3	INSERT	ASTM A351 GR.CF8M	1
4	BODY SEAL	PTFE	1
5	STEM	SS316	1
6	FOLLOWER	SS304	1
7	STEM PACKING	PTFE	1SET
9	SEAT	PTFE	1
10	THRUST WASHER	PTFE	1
17	STEM NUT	SS304	1
20	BOLT	SS304	4
21	BELLEVILLE WASHER	SS304	2
24	O-RING	VITON	2
39	PNEUMATIC ACTUATOR	ALUMINUM	1



DIMENSIONS

Unit:mm

SIZE	1/2"		3/4"		1"		1-1/4"		1-1/2"		2"	
Air Supply	80 PSI		80 PSI		80 PSI		80 PSI		80 PSI		80 PSI	
ACTUATOR	DA	SR	DA	SR	DA	SR	DA	SR	DA	SR	DA	SR
	C-125	C-250 SR2	C-125	C-250 SR2	C-250	C-250 SR3	C-250	C-250 SR4	C-450	C-450 SR2	C-450	C-450 SR3
BORE	9.2		12.5		16.0		20.0		25.0		32.0	
A	120.0	**	120.0	**	144.3	**	144.3	**	149.2	**	149.2	**
B	**	194.6	**	194.6	**	194.6	**	194.6	**	250.0	**	250.0
C	84.0	99.0	84.0	99.0	99.0	99.0	99.0	99.0	118.0	118.0	118.0	118.0
D	62.2	81.4	62.2	81.4	81.4	81.4	81.4	81.4	95.0	95.0	95.0	95.0
E	33.7	47.8	33.7	47.8	47.8	47.8	47.8	47.8	51.5	51.5	51.5	51.5
F	24.0	32.5	24.0	32.5	32.5	32.5	32.5	32.5	32.5	32.5	32.5	32.5
G	MxP0.8	M5xP0.8	MxP0.8	M5xP0.8	M5xP0.8	M5xP0.8	M5xP0.8	M5xP0.8	M6xP1.0	M6xP1.0	M6xP1.0	M6xP1.0
H	23.5	29.7	23.5	29.7	29.7	29.7	29.7	29.7	30.2	30.2	30.2	30.2
I	126.3	141.3	128.8	143.8	142.9	142.9	150.5	150.5	175.7	175.7	181.3	181.3
L	56.5		59.0		71.0		79.2		85.9		100.0	