

Fig No: DA155 / SR 155

1/4" ~ 2" (DN 8 ~ DN 50)

DA:Double Acting SR:Spring Return



Valve Specification :

Design Specification According to ANSI B16.34

Material : Stainless Steel, Carbon Steel or Special Alloy upon request

Blow-out-proof stem design & Anti-static design

Stem packing to comply with **TA-Luft** requirements

Actuator Mounting Shall be in accordance with ISO 5211 - direct mounting design

In-Line Maintenance

End connection: Threaded / Socket Weld / Butt Weld

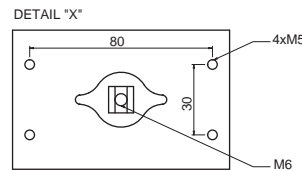
Working Pressure : 1/2" ~ 1" 2000 Psi / 1-1/4" ~ 2" 1500 Psi

Temperature Range : -4 to 356 °F (-20 to 180 °C)

Pressure Test According to API 598

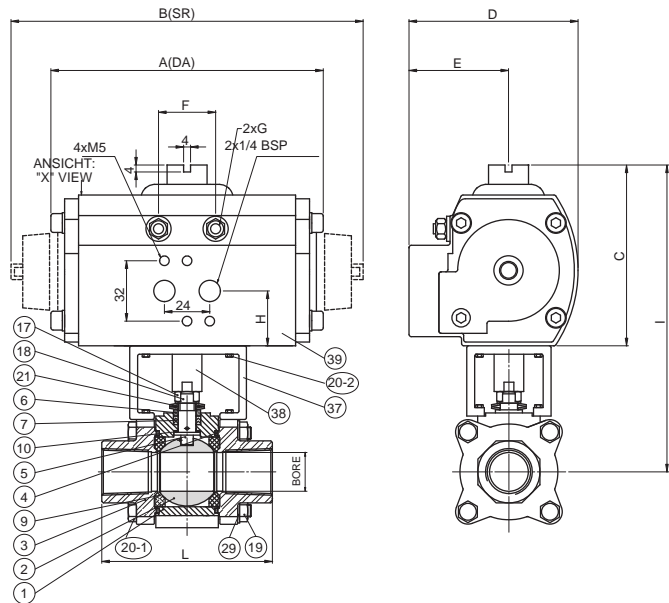
Shell test by water : 1/2" ~ 1" 3000 Psi / 1-1/4" ~ 2" 2250 Psi

Closure seat by Air : 80 Psi ~ 100 Psi



MATERIALS LIST

NO	PART NAME	MATERIAL	Q'TY
1	BODY	ASTM A351 GR.CF8M	1
2	END CAP	ASTM A351 GR.CF8M	2
3	BALL	ASTM A351 GR.CF8M	1
4	BODY SEAL	PTFE.	2
5	STEM	SS316	1
6	FOLLOWER	SS304	1
7	STEM PACKING	NRG	1 SET
9	SEAT	RTFE.	2
10	THRUST WASHER	NRG	1
17	STEM NUT	SS304	1
18	TAB WASHER	SS304	1
19	BOLT NUT	SS304	4-12
20-1	BOLT	SS304	4-12
20-2	MOUNTING BOLT	SS304	8
21	BELLEVILLE WASHER	SS301	1 SET
29	BOLT WASHER	SS304	4-12
37	MOUNTING BRACKET	SS304	1
38	ADAPTER	SS304	1
39	PNEUMATIC ACTUATOR	ALUMINUM	1



DIMENSIONS

Unit:mm

SIZE	1/4"		3/8"		1/2"		3/4"		1"		1-1/4"		1-1/2"		2"	
Air Supply	80 PSI		80 PSI		80 PSI		80 PSI		80 PSI		80 PSI		80 PSI		80 PSI	
ACTUATOR	DA	SR	DA	SR	DA	SR	DA	SR	DA	SR	DA	SR	DA	SR	DA	SR
	C-125	C-250 SR3	C-125	C-250 SR3	C-125	C-250 SR3	C-125	C-250 SR4	C-250	C-450 SR4	C-250	C-1000 SR2	C-450	C-1000 SR4	C-450	C-2250 SR3
BORE	11.1		11.1		14.2		20.6		25.4		31.8		38.1		51.1	
A	120.0	**	120.0	**	120.0	**	120.0	**	144.3	**	144.3	**	149.2	**	149.2	**
B	**	194.6	**	194.6	**	194.6	**	194.6	**	205.6	**	250.0	**	250.0	**	355.0
C	84.0	99.0	84.0	99.0	84.0	99.0	84.0	99.0	99.0	118.0	99.0	141.0	118.0	141.0	118.0	161.0
D	62.2	81.4	62.2	81.4	62.2	81.4	62.2	81.4	81.4	95.0	81.4	119.0	95.0	119.0	95.0	119.0
E	33.7	47.8	33.7	47.8	33.7	47.8	33.7	47.8	47.8	51.5	47.8	64.5	51.5	64.5	51.5	75.5
F	24.0	32.5	24.0	32.5	24.0	32.5	24.0	32.5	32.5	32.5	32.5	46.2	32.5	46.2	32.5	54.0
G	MxP0.8	M5xP0.8	MxP0.8	M5xP0.8	MxP0.8	M5xP0.8	MxP0.8	M5xP0.8	M5xP0.8	M6xP1.0	M5xP0.8	M8xP1.25	M6xP1.0	M8xP1.25	M6xP1.0	M10xP1.5
H	23.5	29.7	23.5	29.7	23.5	29.7	23.5	29.7	29.7	30.2	29.7	33.5	30.2	33.5	30.2	39.0
I	133.3	148.8	133.8	148.8	133.0	148.0	137.0	152.0	155.0	174.0	159.0	201.0	185.3	208.3	207.3	250.3
L	66.0		66.0		71.1		94.0		108.0		115.3		128.0		151.1	